



# The Quick Look

## A Merced County Labor Market Review - November 2009

Welcome to the Merced County labor market review. The Quick Look has been developed by the Department of Workforce Investment staff for the Merced County Local Workforce Investment Board. The data and information is provided by the California Employment Development Department. Questions can be referred to the Department of Workforce Investment, 1880 West Wardrobe Avenue, Merced, CA 95341. Telephone (209) 724-2055. Email: [pitd131@co.merced.ca.us](mailto:pitd131@co.merced.ca.us) or to EDD's Labor Market Information Division at (916) 262-2162.

Merced County Data not adjusted for Seasonality	Labor Force and Industrial Employment					
	March 2006 Benchmark				Percent Change	
	Nov 08	Sep 09	Oct 09	Nov 09	Month	Year
Civilian Labor Force	105,200	107,000	106,800	107,400	0.6%	2.1%
Civilian Employment	90,800	90,400	89,300	87,700	-1.8%	-3.4%
Civilian Unemployment	14,300	16,600	17,500	19,700	12.6%	37.8%
Civilian Unemployment Rate	13.6%	15.5%	16.4%	18.3%		
(CA Unemployment Rate)	8.4%	12.0%	12.3%	12.2%		
(U.S. Unemployment Rate)	6.5%	9.5%	9.5%	9.4%		
<b>Total, All Industries</b>	<b>68,900</b>	<b>69,900</b>	<b>69,700</b>	<b>67,900</b>	<b>-2.6%</b>	<b>-1.5%</b>
Total Farm	10,900	13,300	13,000	10,900	-16.2%	0.0%
Total Nonfarm	58,000	56,800	56,700	57,000	0.5%	-1.7%
Total Private	41,900	41,000	40,900	40,800	-0.2%	-2.6%
Goods Producing	11,200	11,100	10,900	10,500	-3.7%	-6.3%
Natural Resources and Mining and Constuction	2,100	1,900	1,800	1,800	0.0%	-14.3%
Construction	2,100	1,900	1,800	1,800	0.0%	-14.3%
Manufacturing	9,100	9,200	9,100	8,700	-4.4%	-4.4%
Durable Goods	1,700	1,700	1,700	1,700	0.0%	0.0%
Nondurable Goods	7,400	7,500	7,400	7,000	-5.4%	-5.4%
Service Providing	46,800	45,700	45,800	46,500	1.5%	-0.6%
Private Service Producing	30,700	29,900	30,000	30,300	1.0%	-1.3%
Trade, Transportation and Utilities	11,900	11,100	11,200	11,600	3.6%	-2.5%
Wholesale Trade	1,900	1,700	1,800	2,100	16.7%	10.5%
Retail Trade	7,600	7,000	7,000	7,100	1.4%	-6.6%
Food and Beverage Stores	1,600	1,600	1,600	1,600	0.0%	0.0%
General Merchandise Stores	2,100	1,900	1,900	2,000	5.3%	-4.8%
Residual - Miscellaneous Store Retailers	3,900	3,500	3,500	3,500	0.0%	-10.3%
Transportation, Warehousing and Utilities	2,400	2,400	2,400	2,400	0.0%	0.0%
Information	1,200	1,200	1,200	1,200	0.0%	0.0%
Financial Activities	1,700	1,700	1,700	1,700	0.0%	0.0%
Finance and Insurance	1,100	1,100	1,100	1,100	0.0%	0.0%
Real Estate and Rental and Leasing	600	600	600	600	0.0%	0.0%
Professional and Business Services	4,100	4,100	4,100	4,100	0.0%	0.0%
Educational and Health Services	5,500	5,500	5,600	5,600	0.0%	1.8%
Leisure and Hospitality	4,900	4,900	4,800	4,700	-2.1%	-4.1%
Food Services and Drinking Places	1,400	1,400	1,400	1,400	0.0%	0.0%
Residual - Arts, Entertainment, and Recreation	16,100	15,800	15,800	16,200	2.5%	0.6%
Other Services	800	800	800	800	0.0%	0.0%
Government	15,300	15,000	15,000	15,400	2.7%	0.7%
Federal Government	1,600	1,900	1,800	1,800	0.0%	12.5%
State Government	600	600	600	600	0.0%	0.0%
Local Government	0	0	0	0	0.0%	0.0%

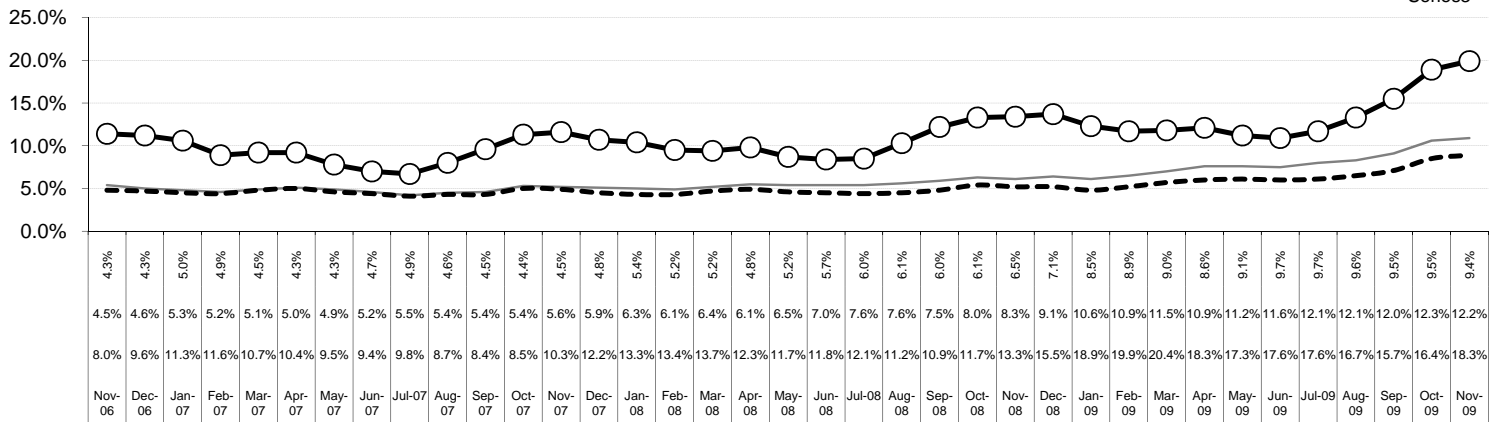
The County continues with one of the highest unemployment rates in the State, ranking 54th out of 58 counties in the month of November. The preliminary result is an increase of 1.9 percentage points in the unemployment rate from the October rate. For year ago data, this preliminary figure is an increase of 4.7 percentage points in the unemployment rate.

Overall, the County's Civilian Labor Force increased by 600 persons over last month's figure and an increase of 2,200 persons over year ago figure. Industrial employment decreased by 1,800 jobs in November over October's figure and an decrease of 1,000 jobs over year ago's figures.

## The Quick Look

Nov 2009

### Merced County, California, and the United States Unemployment Rate November 2006 to November 2009

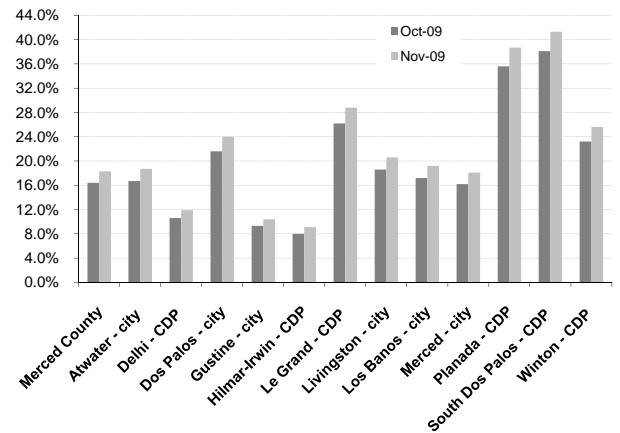


### Sub County average unemployment rates for the county, cities, and municipalities.

Area Name	Labor Force	Employment	Unemployment	
			Number	Rate
Merced County	107,400	87,700	19,700	18.3%
Atwater city	12,600	10,300	2,400	18.7%
Delhi CDP	4,000	3,500	500	11.9%
Dos Palos city	2,100	1,600	500	24.0%
Gustine city	2,500	2,200	300	10.4%
Hilmar Irwin CDP	2,800	2,500	300	9.1%
Le Grand CDP	800	600	200	28.8%
Livingston city	5,300	4,200	1,100	20.6%
Los Banos city	13,500	10,900	2,600	19.2%
Merced city	31,800	26,000	5,800	18.1%
Planada CDP	2,000	1,200	800	38.7%
South Dos Palos CDP	500	300	200	41.3%
Winton CDP	4,200	3,100	1,100	25.6%

CDP - Census Designated Place

### Merced County - Community Unemployment



Merced County's workforce has grown over the past 16 years reflecting improvement of the County's economic well being; however, unemployment remains a consistent barrier to greater prosperity. Average unemployment has fluctuated from an annual low of 9.3 percent to an annual high of 17.5 percent.

### Counties in the San Joaquin Valley Quick Look

County	Rank	Labor Force	Employ	Unemployed	Rate
Merced	54	107,400	87,700	19,700	18.3%
Fresno	44	442,400	369,300	73,100	16.5%
Kern	39	375,800	319,100	56,700	15.1%
Kings	46	59,400	49,500	9,900	16.7%
Madera	38	67,500	57,400	10,200	15.0%
San Joaquin	47	302,600	251,400	51,100	16.9%
Stanislaus	50	240,500	199,100	41,300	17.2%
Tulare	44	205,600	171,600	34,000	16.5%
San Joaquin Valley		1,801,200	1,505,100	296,000	16.4%

### Counties in the San Joaquin Valley Unemployment Rates

