



# The Quick Look

## A Merced County Labor Market Review - December 2011

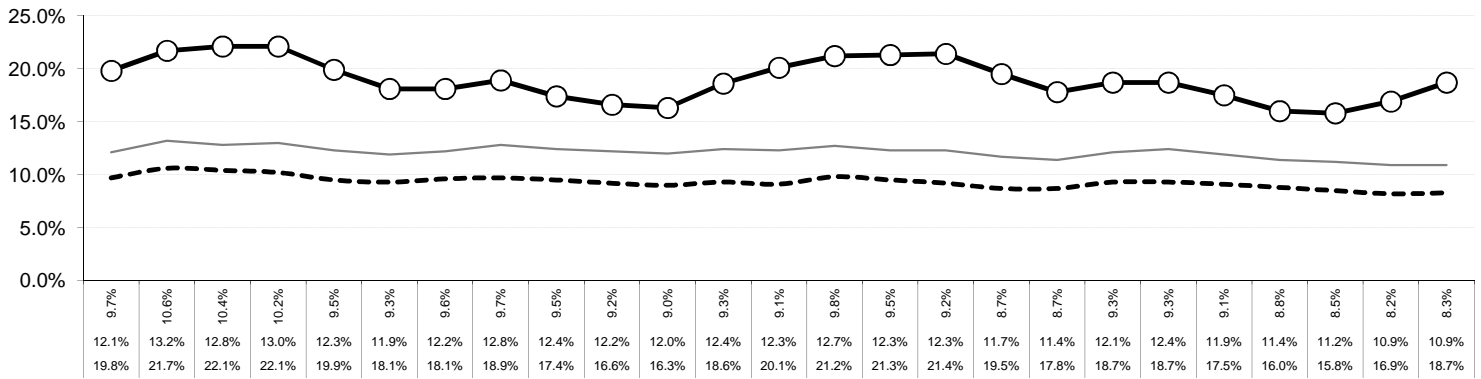
Welcome to the Merced County labor market review. The Quick Look has been developed by the Department of Workforce Investment staff for the Merced County Local Workforce Investment Board. The data and information is provided by the California Employment Development Department. Questions can be referred to the Department of Workforce Investment, 1880 Wardrobe Avenue, Merced, CA 95341. Telephone (209) 724-2044. Email: amendoza@co.merced.ca.us or to EDD's Labor Market Information Division at (916) 262-2162.

Merced County Data not adjusted for Seasonality	Labor Force and Industrial Employment					
	March 2010 Benchmark					
	Dec 10	Oct 11	Nov 11	Dec 11	Percent Change	
					Month	Year
Civilian Labor Force (1)	106,100	106,300	104,600	103,700	-0.9%	-2.3%
Civilian Employment	85,000	89,300	87,000	84,300	-3.1%	-0.8%
Civilian Unemployment	21,100	16,900	17,600	19,400	10.2%	-8.1%
Civilian Unemployment Rate	19.9%	15.9%	16.8%	18.7%	0	0
(CA Unemployment Rate)	12.3%	11.2%	10.9%	10.9%	0	0
(U.S. Unemployment Rate)	9.1%	8.5%	8.2%	8.3%	0	0
<b>Total, All Industries (2)</b>	<b>64,400</b>	<b>68,700</b>	<b>65,800</b>	<b>63,000</b>	<b>-4.3%</b>	<b>-2.2%</b>
Total Farm	8,400	12,000	10,000	8,300	-17.0%	-1.2%
Total Nonfarm	56,000	56,700	55,800	54,700	-2.0%	-2.3%
Total Private	39,900	40,900	39,700	38,900	-2.0%	-2.5%
Goods Producing	9,400	9,500	9,400	9,400	0.0%	0.0%
Mining, Logging, and Construction	1,700	1,600	1,600	1,600	0.0%	-5.9%
Manufacturing	7,700	7,900	7,800	7,800	0.0%	1.3%
Durable Goods	1,000	1,000	1,000	1,100	10.0%	10.0%
Nondurable Goods	6,700	6,900	6,800	6,700	-1.5%	0.0%
Service Providing	46,600	47,200	46,400	45,300	-2.4%	-2.8%
Private Service Producing	30,500	31,400	30,300	29,500	-2.6%	-3.3%
Trade, Transportation & Utilities	12,200	12,400	12,100	11,800	-2.5%	-3.3%
Wholesale Trade	2,500	2,500	2,400	2,300	-4.2%	-8.0%
Retail Trade	7,300	7,400	7,300	7,200	-1.4%	-1.4%
Food & Beverage Stores	1,700	1,700	1,700	1,700	0.0%	0.0%
General Merchandise Stores	2,100	2,000	2,100	2,100	0.0%	0.0%
Retail Trade - Residual	3,500	3,700	3,500	3,400	-2.9%	-2.9%
Transportation, Warehousing & Utilities	2,400	2,500	2,400	2,300	-4.2%	-4.2%
Information	1,200	1,300	1,200	1,200	0.0%	0.0%
Financial Activities	1,600	1,600	1,600	1,500	-6.3%	-6.3%
Finance & Insurance	1,000	1,000	1,000	900	-10.0%	-10.0%
Real Estate & Rental & Leasing	600	600	600	600	0.0%	0.0%
Professional & Business Services	3,600	3,800	3,600	3,500	-2.8%	-2.8%
Educational & Health Services	6,000	6,100	5,900	5,800	-1.7%	-3.3%
Leisure & Hospitality	4,600	4,800	4,600	4,400	-4.3%	-4.3%
Other Services	1,300	1,400	1,300	1,300	0.0%	0.0%
Government	16,100	15,800	16,100	15,800	-1.9%	-1.9%
Federal Government	800	800	700	700	0.0%	-12.5%
State & Local Government	15,300	15,000	15,400	15,100	-1.9%	-1.3%
State Government Education	1,700	2,000	2,000	1,800	-10.0%	5.9%
State Government Excluding Education	600	600	600	600	0.0%	0.0%
Local Government	13,000	12,400	12,800	12,700	-0.8%	-2.3%
Special Districts plus Indian Tribes	600	700	700	700	0.0%	16.7%

## The Quick Look

Dec 2011

### Merced County, California, and the United States Unemployment Rate December 2009 to December 2011

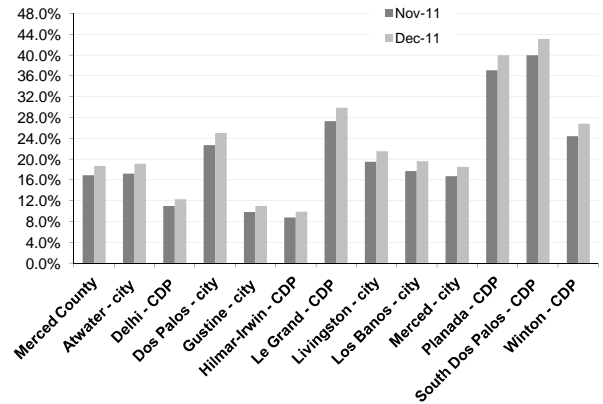


### Sub County average unemployment rates for the county, cities, and municipalities.

Area Name	Labor Force	Employment	Unemployment	
			Number	Rate
Merced County	103,700	84,300	19,400	18.7%
Atwater city	12,200	9,900	2,300	19.1%
Delhi CDP	3,900	3,400	500	12.3%
Dos Palos city	2,100	1,500	500	25.0%
Gustine city	2,400	2,100	300	11.0%
Hilmar Irwin CDP	2,700	2,400	300	9.9%
Le Grand CDP	800	500	200	29.9%
Livingston city	5,200	4,100	1,100	21.5%
Los Banos city	13,000	10,400	2,600	19.6%
Merced city	30,700	25,000	5,700	18.5%
Planada CDP	1,900	1,100	700	40.0%
South Dos Palos CDP	500	300	200	43.1%
Winton CDP	4,100	3,000	1,100	26.8%

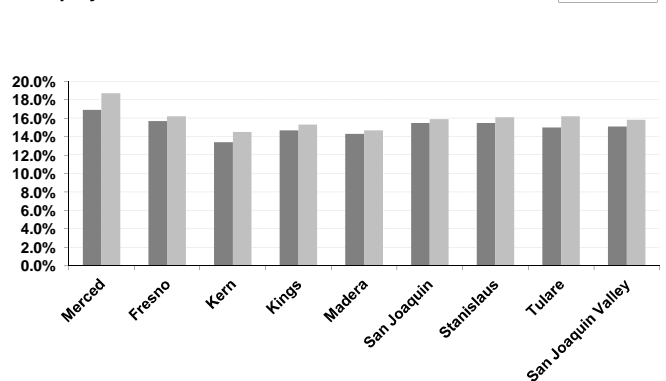
CDP - Census Designated Place

### Merced County - Community Unemployment



Merced County's workforce has grown over the past 16 years reflecting improvement of the County's economic well being; however, unemployment remains a consistent barrier to greater prosperity. Average unemployment has fluctuated from an annual low of 9.3 percent to an annual high of 17.5 percent.

### Counties in the San Joaquin Valley Unemployment Rates



### Counties in the San Joaquin Valley Quick Look

County	Rank	Labor Force	Employ	Unemployed	Rate
Merced	55	103,700	84,300	19,400	18.7%
Fresno	48	431,400	361,600	69,700	16.2%
Kern	38	371,600	317,800	53,700	14.5%
Kings	42	61,200	51,800	9,400	15.3%
Madera	40	65,200	55,600	9,600	14.7%
San Joaquin	44	298,000	250,500	47,500	15.9%
Stanislaus	47	234,000	196,300	37,800	16.1%
Tulare	48	211,400	177,300	34,200	16.2%
San Joaquin Valley		1,776,500	1,495,200	281,300	15.8%