

## COUNTY GOVERNMENT

The County is divided into five supervisorial districts and each Supervisor is elected by the Constituents within that district. The Board of Supervisors has both legislative and quasi judicial functions as well as administrative duties and responsibilities. The Board is assisted in its administrative responsibilities by the County Executive Officer (CEO) who is delegated broad responsibilities in the areas of budget development and administration. The Board appoints the County Executive Officer, County Counsel, and Agricultural Commissioner.

Other officials who are elected on a county-wide basis include the Assessor, Auditor-Controller, Treasurer/Tax Collector, District Attorney, and Sheriff.

With a FY '09-10' budget of approximately \$454 million, and a staff of 2010 full time and 274 part time employees, the county provides a broad variety of services such as law and justice, community development, fire protection, public health, public works, community services, and general/ administrative services.

### How To Apply

Send resumes and applications to:  
**Merced County Human Resources**  
2222 M Street  
Merced, CA 95340  
(209) 385-7682

Applications are available online at:  
[www.co.merced.ca.us](http://www.co.merced.ca.us)

Merced County is a Drug Free Workplace  
EQUAL OPPORTUNITY EMPLOYER  
Minorities, Women and Disabled are  
encouraged to Apply  
California Relay Services(1-800-735-2929)  
is available for the Hearing Impaired.

## BENEFITS

Merced County employment benefits include: vacation, sick leave, 13 holidays per year including one personal holiday: medical, dental, vision and life insurance, Social Security integrated with the 1937 Retirement Act (3%@ 60 for MISC).

## EXPENSE ALLOWANCE

\$100 per month expense allowance.

## MANAGEMENT BENEFITS

The County provides an \$80,000 group life and accidental death and dismemberment policy, currently employees qualify for group health and life insurance coverage after retirement. Ninety-six (96) hours executive time off each year in addition to the normal holidays mentioned above. Other benefits include management sick leave, and vacation sell back yearly.

## THE COUNTY

Merced County (Population 245,658) is located in the heart of the San Joaquin valley, the world's most productive agricultural area, and spans from the coastal ranges to the foothills of Yosemite National Park.

The county's population is ethnically diverse and there are opportunities to enjoy the different cultures of its residents.

The City of Merced, known as the "Gateway to Yosemite," is the County seat with a population of 76,313. Merced offers a small community atmosphere, residential neighborhoods characterized by wide, tree-lined streets, and homes in a wide economic range with the average three-bedroom home available for \$165,000. The University of California, Merced, located in a beautiful country setting next to Lake Yosemite, opened in the fall of 2005.

With an exceptional central location in the state, coupled with good highways, trains, bus, and air service, travel to the San Francisco Bay Area or the picturesque seaside resorts of Monterey and Carmel takes about two hours. Lake Tahoe and Reno are within a four-hour drive.

*Merced County invites applications for the position of*



## DEPUTY PUBLIC HEALTH DIRECTOR

Merced County, California

\$109,033.00 –\$132,641.00 Annually

Open August 10, 2010 until 5:00 pm on August 31, 2010



## **THE POSITION**

Under direction, assist in planning, organizing, directing and managing the Public Health Services of the department including health education, emergency preparedness, indigent health care, jail health quality assurance, public health nursing, maternal and child health, communicable disease control, clinic services and the public health laboratory; direct fiscal and personnel management; program planning and evaluation; and public and political relations. Act for the Public Health Director, as delegated; and perform other related work as required.



**Merced County website:**  
[www.co.merced.ca.us](http://www.co.merced.ca.us)

## **THE IDEAL CANDIDATE WILL HAVE THE**

### **KNOWLEDGE OF**

- Principles and practices of public health, communicable disease, health education, public health laboratories, medical health care services and fiscal, personnel and program management.
- Community public health and medical health care issues, needs, and problems.
- State and local health laws and political issues.
- General operating policies and functions of the State Dept. of Health Services and General operating policies and functions of the California Department of Public Health and the California Department of Health Care Services.
- The sociological and cultural problems involved in public health and medical health care programs.
- Principles and techniques of effective employee supervision, training and development, management and public administration.

### **ABILITY TO**

- Plan, organize, develop and manage multiple operations and functions.
- Assist and train subordinate staff in planning, organizing and executing their work.
- Develop, organize, analyze, and interpret statistical data; analyze issues and develop effective solutions.
- Use sound judgment applying policies, laws and ordinances, develop budgets and control expenditures.
- Make oral and written presentations.
- Be responsible for the development, maintenance, and preparation of records and reports.
- Effectively represent the department.
- Coordinate assigned Public Health and medical health care programs with community organizations and other government agencies.
- Establish and maintain cooperative relationships with those contacted during the course of the work.

***Striving for Excellence***

## **MINIMUM QUALIFICATIONS**

### **Experience:**

Three (3) years of administrative experience in a supervisory or management capacity.

### **Education:**

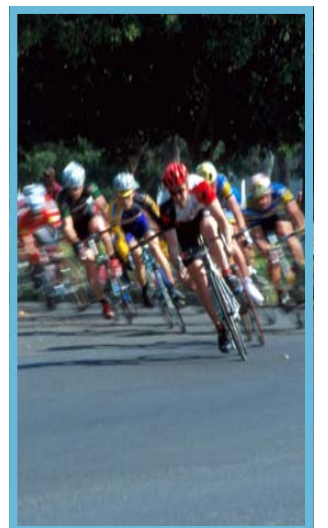
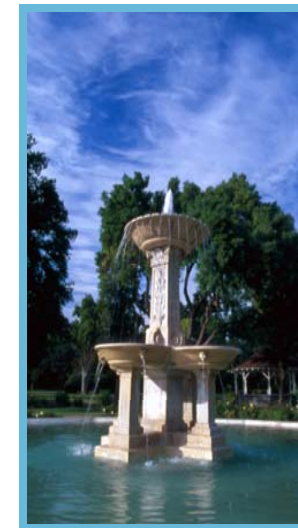
Graduation from an accredited four (4) year college or university with a degree in public, business or health administration, or a closely related field. A Master's Degree in Public Health from a program accredited by the American Public Health Association, or a Master's Degree in health administration may substitute for one (1) year of the required experience.

### **License:**

Possess and maintain a valid California Driver's License.

### **Desirable:**

Administrative experience in Public Health or medical health care desirable.



### **Please complete required supplemental questionnaire attached to application.**

1. Describe your understanding of and experience with the National Public Health Performance Standards Program, and how performance standards relate to national public health accreditation activities currently underway.
2. Local Public Health Departments operate programs and provide core public health services through access to a variety of funding sources. Describe your experience with governmental finance and budgeting, and ideas or experience you have to leverage public health funding during these challenging economic times.
3. Describe your greatest success that demonstrates your executive leadership skills. Explain what you did and the impact on the organization.
4. What do you see as the potential impacts of national healthcare reform (through the Patient Protection and Affordable Care Act) on Public Health Departments?