

ACA Updates

February 27, 2014

- Covered California / Medi-Cal - statewide
- Medi-Cal Update – Merced County
- New Opportunities
- Resources

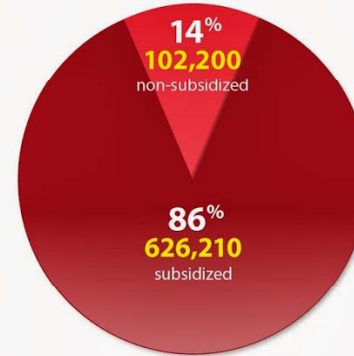
Covered California Enrollment Statistics Feb. 19, 2014



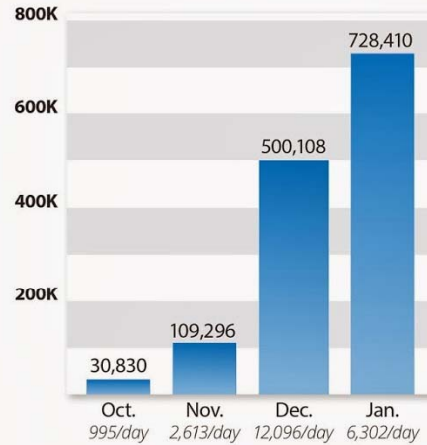
Covered California
Oct. 1-Jan. 31 Enrollment
Individuals Who Selected Plans

728,410

Subsidy eligible	626,210
Not subsidy eligible	102,200

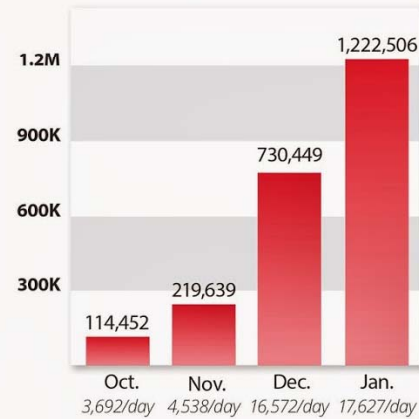


Cumulative Enrollment



Cumulative Applications Completed

individual eligibility determinations

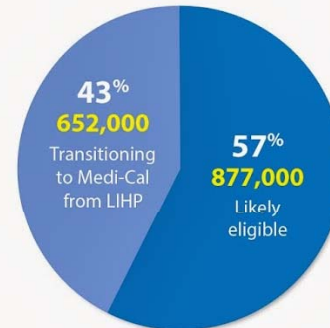


California Department of
HealthCare Services

Medi-Cal
Oct.-Jan. Enrollment

1,529,000

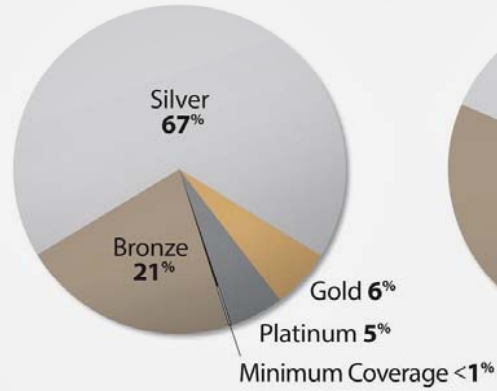
Likely eligible	877,000
Transitioning from LIHP	652,000



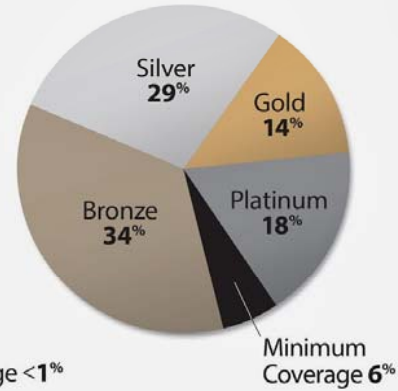
Covered California Enrollment Statistics Feb. 19, 2014

Oct.-Jan. Enrollment by Metal Tier

Subsidy eligible



Non-subsidy eligible



Small Business Health Options Program

571 Small Businesses
5,000 Employees

Covered California

Key Deadlines & Dates

Last day to choose a plan for coverage that begins April 1

**March
15**

Last day to submit payment for April 1 coverage

**March
26**

Last day to choose a plan for coverage that begins May 1

**April
15**

Medi-Cal – Merced County

- Expansion Population - Central California Alliance for Health enrollment = 1,921
- CalFresh Express Lane enrollment eligible = 7,687

Hospital Presumptive Eligibility (PE) Program

- Participating hospitals – streamline on-line process
- 5 questions – no citizenship screening
- Full scope Medi-Cal for 2 months
- One time eligibility / year
- Fee for Service / Not Managed Care
- Eligible = children (0-18),
 - Parents/Caregivers,
 - Pregnant Women,
 - Adults (18 to 64), Former
 - Foster Care Youth (18 to 26 yrs.)

Remaining Uninsured

- SB 1005 Lara
- Create “California Health Exchange Program for Californians” 2016
- California Health Trust Fund for All Californians
- Health Plan subsidies from the Exchange
- Full Scope Medi-Cal State – only funds

Opportunities

- AB 82 – Outreach and Enrollment for Medi-Cal eligible individuals
 - Mental health and substance abuse disorders
 - Probationers
 - Mix immigration status / limited English
 - Young men and boys of color
- Blue Shield grants: Team-based Care and Integration of Primary Care and Behavioral Health
- www.blueshieldcafoundation.org

Resources

- **Enroll America** – Webinars – series of 6 starting February 24th www.enrollamerica.org
- **Blue Shield of California Foundation Webinar: *How to Build Better Health Care for Californians*, March 13, 12 pm-1:00pm**
- **Pacific Health Consulting Group Paper: *Ready, Set, Enroll* – February 2014**