



**CONNECT AND COMMUNICATE  
COMMUNICATE AND CONNECT**

Children's System of Care  
Betty Hoskins, LCSW  
Phone: 209-381-6800  
Fax: 209-725-3883  
Email: [bhoskins@co.merced.ca.us](mailto:bhoskins@co.merced.ca.us)

**CONNECT AND COMMUNICATE  
COMMUNICATE AND CONNECT**

## **Merced Children's System of Care**

### **Referrals and Linkage to Mental Health Services**

## **An Interagency Handbook for Networking**



#### **Specialty Mental Health Programs**

- **TBS**
- **WeCan**
- **DoWith**
- **CHAT**
- **PCIT**

**Date: 07/27/2016**

## How to link with Mental Health Services:

---

### **POE (Point of Entry) Appointments**

- For Merced, Atwater, Los Banos, and the greater Westside area call (209) 381-6800. For Livingston, Delhi and the Northside area, call (209) 394-4032. Ask to schedule an appointment for an assessment. *Social Workers/Probation Officers: Authorization to treat dependents of the court must be approved by the legal guardian. Foster parents and Foster Family Agency social workers do not qualify as the legal guardian. These assessments are provided in our CARS (Community Access and Recovery Services) Program.*

### **CSU (Crisis Stabilization Unit)**

- For crisis walk-ins, go to the CSU if you are over 18 years of age. The CSU is open 24 hours a day, seven days a week. The CSU is located within the Marie Green Psychiatric Facility at 300 East 15th Street in Merced. Use the south side entrance. For more information call (209) 381-6879. If the youth is under 18, please go to nearest Emergency Room. There are crisis staff stationed at the hospital.

### **ES (Emergency Services)**

- For emergency situations, call 911. Mental Health is in the process of reinstating our mobile emergency response team. Law enforcement may assess the situation and transport the individual to the CSU or hospital, if indicated.

## Community Mental Health Providers—Merced

---

### **Psychiatrists— Psychiatric Medicine**

Yarbrough, John, M.D.	(209) 381-6800
Popli, Gagan, M.D.	(209) 358-8425

### **Behavioral Health Centers—Medicine and Therapy**

Castle Behavior Health	(209) 358-0178
Family Behavior Health	(209) 722-8062
Golden Valley Health	(209) 726-8911

### **Therapists—Therapy**

Aspiranet	(209) 726-3090
Associated Psychotherapists	(209) 385-3585
Russell Curry, Patty LMFT	(209) 722-7030
Sierra Vista	(209) 205-1058
Scott, Elizabeth LMFT	(209) 733-3181
Williamson, Barbara LCSW	(209) 357-0600
Velasquez, Amy LMFT	(209) 726-1015

### **Psychologists— Therapy and Testing**

Biesiada, Jule Ph.D.	(209) 631-9631
Morrow, Ada Ph.D.	(209) 384-1571
Neufeld, Andrew Ph.D.	(209) 384-2554

## Community Resources

---

### REDIRECT

- Psycho-social education for families affected by delinquent behavior.
- Open to the public at no cost.
- Four sessions, every Wednesday.
- See REDIRECT flyer or contact the Family Resource Council at (209) 381-5980.

### Total Self Insight

- Approved domestic violence batterer's program, anger management, stress management, conflict resolution and life skills.
- Services for adolescents and adults.
- Fee for service.
- 1575 West Main Street, Merced, CA 95340, (209) 384-3988.

### Family Resource Council

- Referral bank for Merced County Family Service Providers. The hub of information and flyers!
- (209) 381-5980.

## How to link with Mental Health Services:

---

### SOS Committee (Supportive on Going Services)

- SOS is an interagency problem-solving committee. Mental Health is represented at SOS. The Family Resource Council is located at 1573 Main Street in Merced. SOS meets every Wednesday at 8:30 AM. Contact The Family Resource Council at (209)381-5980 to schedule an appointment . The referring party is responsible for notifying partners involved with the family of the appointment.

*Social Workers: SOS approves ITFC placements.*

### Placement Council

- The Placement Council is an administrative interagency committee that reviews requests for group home placements as well as access to interagency specialty programs; i.e., DoWith, WeCan, Youth Specialty Services. Mental Health is represented at the Council. The Placement Council meets on Tuesdays at 8:30 AM at the Aspiranet Office on Hwy 59. Call Probation at (209) 385-7495 to schedule a case presentation.



## Specialty Services

---

### Therapeutic Behavioral Services (TBS)

- Intense short-term interventions focusing on specific behavior that is jeopardizing placement.
- Ages 0 to 21.
- Must have previous hospitalization(s), or group home placement, or at risk of a group home placement.
- Full Scope Medi-Cal and receiving Mental Health Services.
- Referral contact for foster youth: On-site Child Welfare Clinician at 726-3090.
- Referral contact for youth in general: Children's System of Care Program Manager at (209) 381-6800.
- Contact for open TBS cases: Aspiranet TBS Coordinator at (209)726-3090.
- Contact for open TBS cases after business hours: (209) 620-3319.



## Community Resources

---

### Supportive On-going Services (SOS)

- Interagency problem-solving committee.
- Public invited.
- Contact the Family Resource Council to make an appointment at (209) 381-5980.

### Special Education

- If the family reports a learning difficulty in school, advise them to:
  - “Make a request in writing for a Special Education Evaluation. Send the request to the principal.”

### Challenged Family Resource Center

- A parent-operated agency offering information, advocacy, and parent to parent home visiting for children and adult children afflicted with:
  - Mental Illness
  - Autism/Aspergers
  - Down's Syndrome
  - Developmental Delays
  - Physical Handicaps
- Contact Challenged Family Resource Center at (209) 385-5314.

# CHAT



## *Child*

### Abuse Treatment Program

Treatment and services to child victims of violence, abuse, neglect, domestic violence, and abduction.

- Contact the Human Services Main Street Center at (209) 385-7590.
- No cost.

## **Building work -relations works!**

### **WeCan**

- Full service partnership program offering 24-hour availability in the home. WrapAround services for the family, with the family, driven by the family.
- Ages 0 to 21.
- Child Welfare involvement; i.e., foster care or at risk of foster care.
- Funded by MHSA. Medi-Cal not a requirement.
- Referral contact for foster youth: On-site Child Welfare Clinician at (209) 726-3090.
- Referral contact for youth in general: Children's System of Care Program Manager at (209)381-6800.
- Contact for open WeCan cases during business hours: Aspiranet WeCan Clinical Supervisor at (209)26-3090.
- Contact for open WeCan cases after business hours: (209)620-3319.

## Specialty Services

---



### DoWith

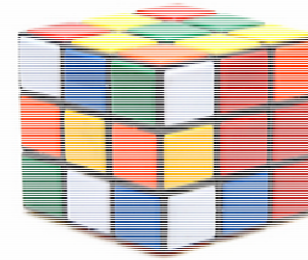
- Full service partnership program offering 24-hour availability in the home. WrapAround services for the family, with the family, driven by the family.
- Ages 0 to 21.
- High Level (RCL 10 and above) alternative to Child Welfare or Probation Placements.
- Must make a case presentation to the Placement Council for enrollment. Call Probation at (209) 385-7495 to schedule a case presentation.
- Contact for open DoWith cases during business hours: Aspiranet DoWith Clinical Supervisor at (209) 725-2125.
- Contact for open DoWith cases after business hours: (209)756-5443.

### PCIT(Parent Child Interaction Therapy)

- ◆ For youth between 3-7 years of age with behavioral challenges such as aggression, non-compliance, defiance and temper tantrums.
- ◆ Parent Coaching, 1:1 instruction
- ◆ Teaching Strategies

## THE CUBE Transition Age Youth 16 to 25

---



**C**ommunity  
**U**nited  
**B**y  
**E**mpowerment

Youth in leadership.

Serving and inspiring youth.

Youth ages 16 to 25 emancipating from foster care and/or service agencies.

### The CUBE

- Fostering independence and self-sufficiency.
- A welcoming, fun, safe space and place for youth.
- Explore Discovery Recovery Practice Learn
- Mental Health Services
- Open 10:00 to 5:00, Monday to Friday.
- No cost
- Contact The CUBE at (209) 381-6800.